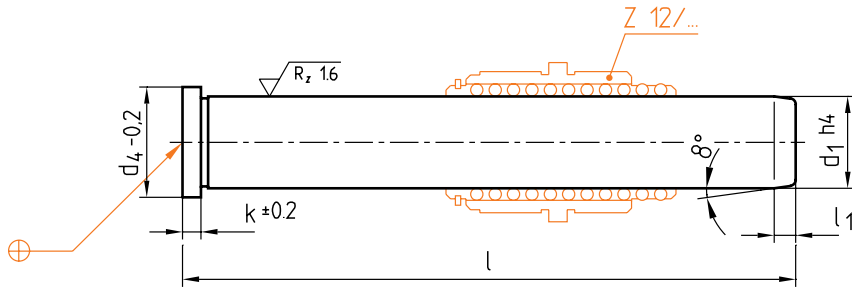


Z012/...

Mat.: ≈ 1.1213/62 ± 2 HRC



► Info



l ₁	d ₄	k	d ₁	l	Nr./No.
4	16	4	12	80	Z012/12x 80
				100	100
				120	120
7	22	6	18	120	Z012/18x120
				140	140

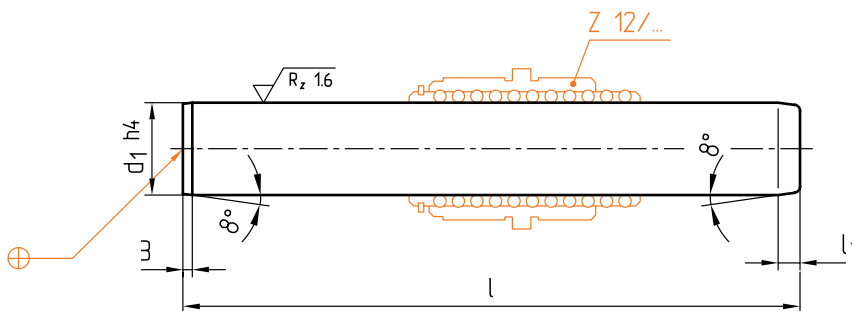
l ₁	d ₄	k	d ₁	l	Nr./No.
7	22	6	18	160	Z012/18x160
				160	Z012/30x160
			30	200	200
				240	240

Z013/...

Mat.: ≈ 1.0501/62 ± 2 HRC
DIN 9825-2



► Info



l ₁	d ₁	l	Nr./No.
4	12	100	Z013/12x100
		125	125
7	18	125	Z013/18x125
		160	160

l ₁	d ₁	l	Nr./No.
7	30	160	Z013/30x160
		240	240

This is trial version
www.adultpdf.com